

**SUBJECT: IMPROVED ENGINE AIR INTAKE COVER (SUPERSEDES PC-12 SL-246)**

To all Customers, Operators and Service Centers:

Date: Jan 06/25

Effectivity: All PC-12 Series Aircraft

This Service Letter supersedes PC-12 SL-246.

PC-12 SL-246 was issued in February 2024 to draw attention to the possibility of the engine air intake cover being accidentally left in position when not needed. Pilatus recommended the installation of an additional belt between the engine air intake cover and the right exhaust stub cover, ensuring that the inlet cover is removed when the engine operates.

After the distribution of PC-12 SL-246, there were only a few demands for the proposed belt, but further occurrences are still being reported from the field.

Consequently, Pilatus strongly recommend installing the new belt to all existing engine air intake covers.

For the belt P/N, refer to IPD 12-A-10-10-00-010-941A-A or 12-B-10-10-00-010-941A-A.

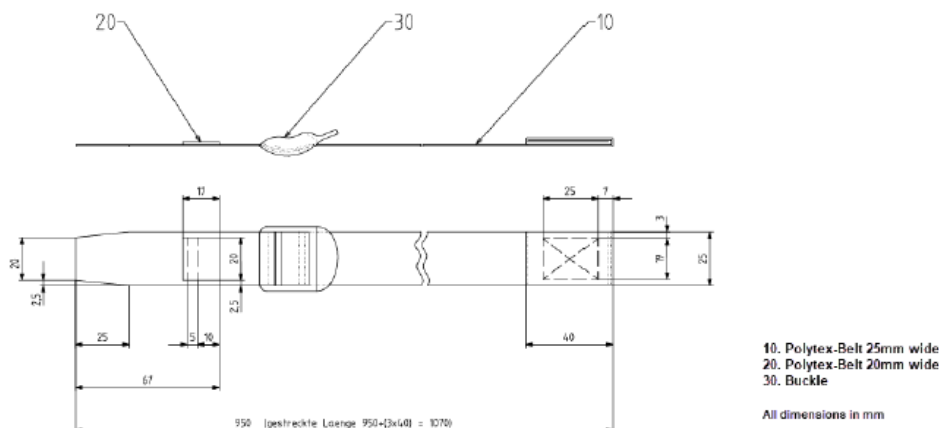
For the installation of the new belt, refer to:

- **MSN 101 - 888** - AMM 12-A-10-10-00-00A-901A-A, 12-A-10-10-00-01A-920A-A
- **MSN 1001 - 1719, 1721 - 1944** - AMM 12-B-10-10-00-00A-901A-A, 12-B-10-10-00-00A-901B-A, 12-B-10-10-00-01A-920A-A
- **MSN 1720, 2001 and Up** - AMM 12-C-10-10-00-00A-901A-A, 12-B-10-10-00-01A-920A-A.

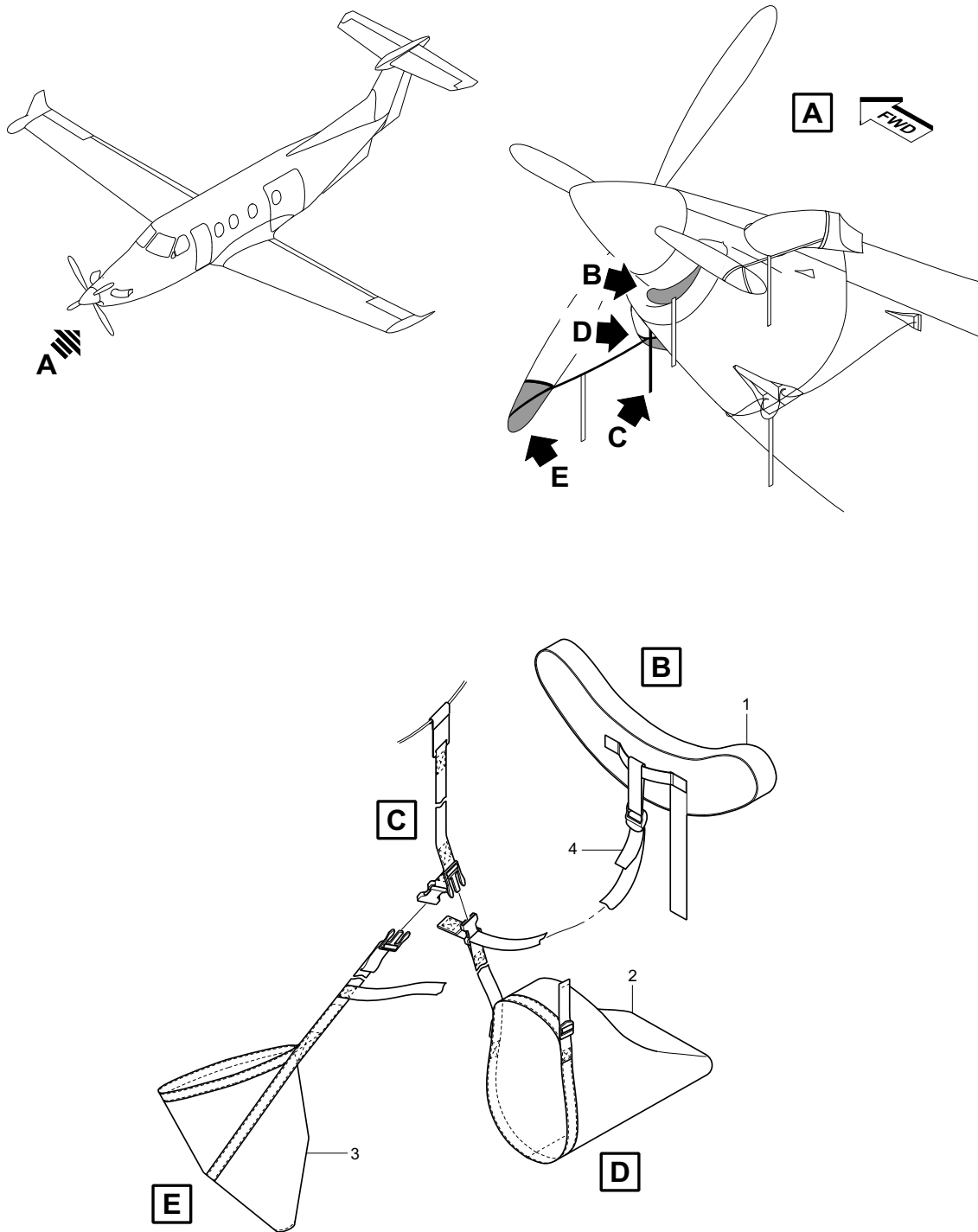
The new belt will be included in both versions of the existing park assembly equipment kit:

- For aircraft with a four-bladed propeller, see Figure 1
- For aircraft with a five-bladed propeller, see Figure 2.

As an alternative to the Pilatus supplied parts, the belt can be locally manufactured using locally supplied materials. Refer to the manufacturing drawing below for the dimensions of the belt used to attach the air inlet cover:



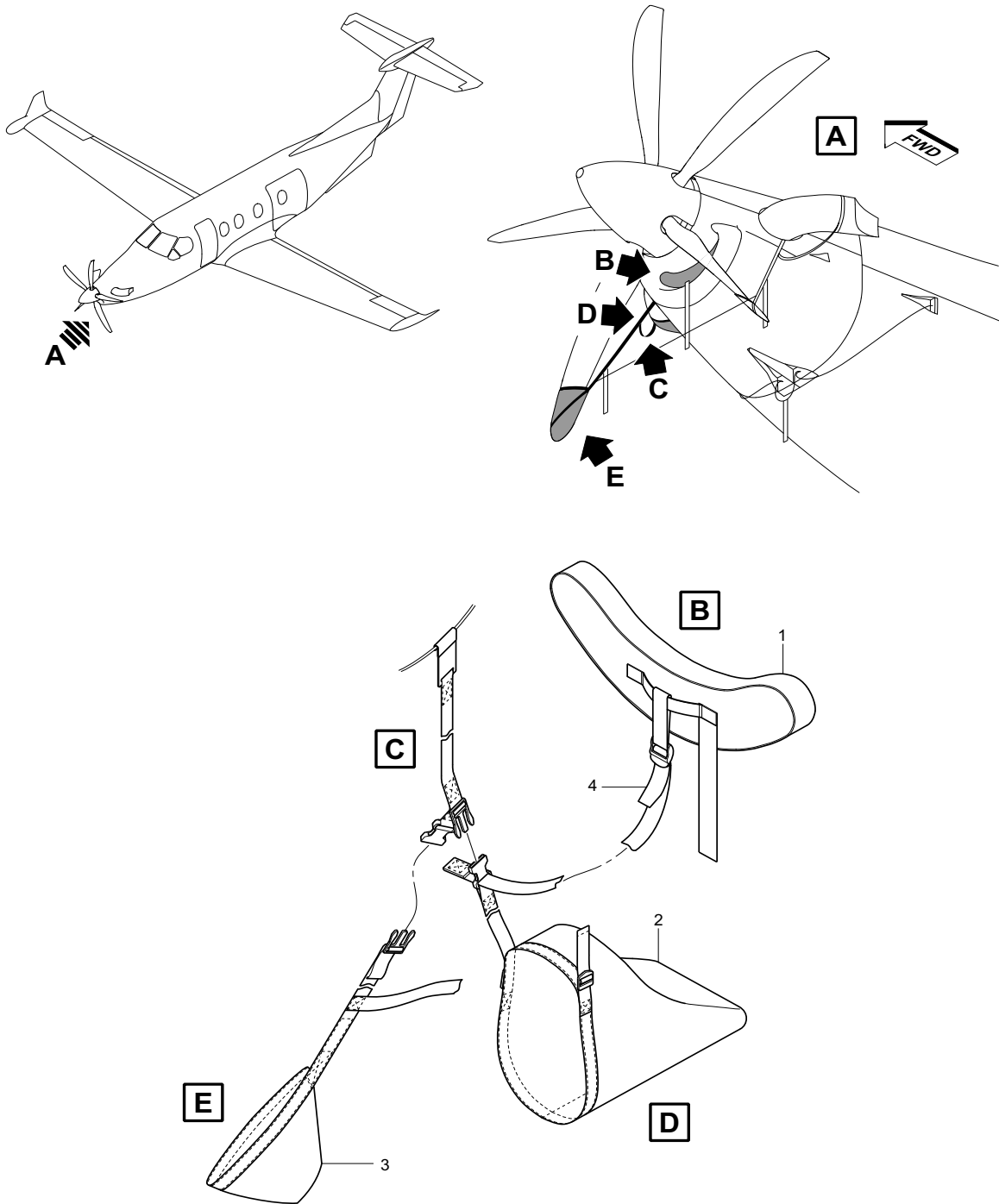
Operators that require additional information should contact their authorized Pilatus Service Center, or Pilatus Customer Support on [www.pilatus-aircraft.com](http://www.pilatus-aircraft.com) → contact us



12-A-101000-A-S4080-05345-A-01-1

Figure 1 - Four-Bladed Propeller

- 1 Engine air intake cover
- 2 Right exhaust duct cover
- 3 Propeller blade sleeve
- 4 Belt



12-B-101000-A-S4080-05346-A-01-1

Figure 2 - Five-Bladed Propeller

- 1 Engine air intake cover
- 2 Right exhaust duct cover
- 3 Propeller blade sleeve
- 4 Belt

INTENTIONALLY BLANK