

SUBJECT: IDENTIFICATION OF THE NOSE LANDING GEAR (NLG) RH DRAG LINK ASSEMBLY

To all Customers, Operators and Service Centers:

Date: Jul 06/22

Effectivity: All PC-12, PC-12/45, PC-12/47 and PC-12/47E Series Aircraft MSN 101 thru 1450.

This Service Letter is issued to draw attention to the identification of the NLG RH drag link assembly.

It is difficult to distinguish between the two possible RH drag link assemblies, P/N 532.20.12.289 and P/N 532.20.12.296, that could be installed in the NLG mechanism.

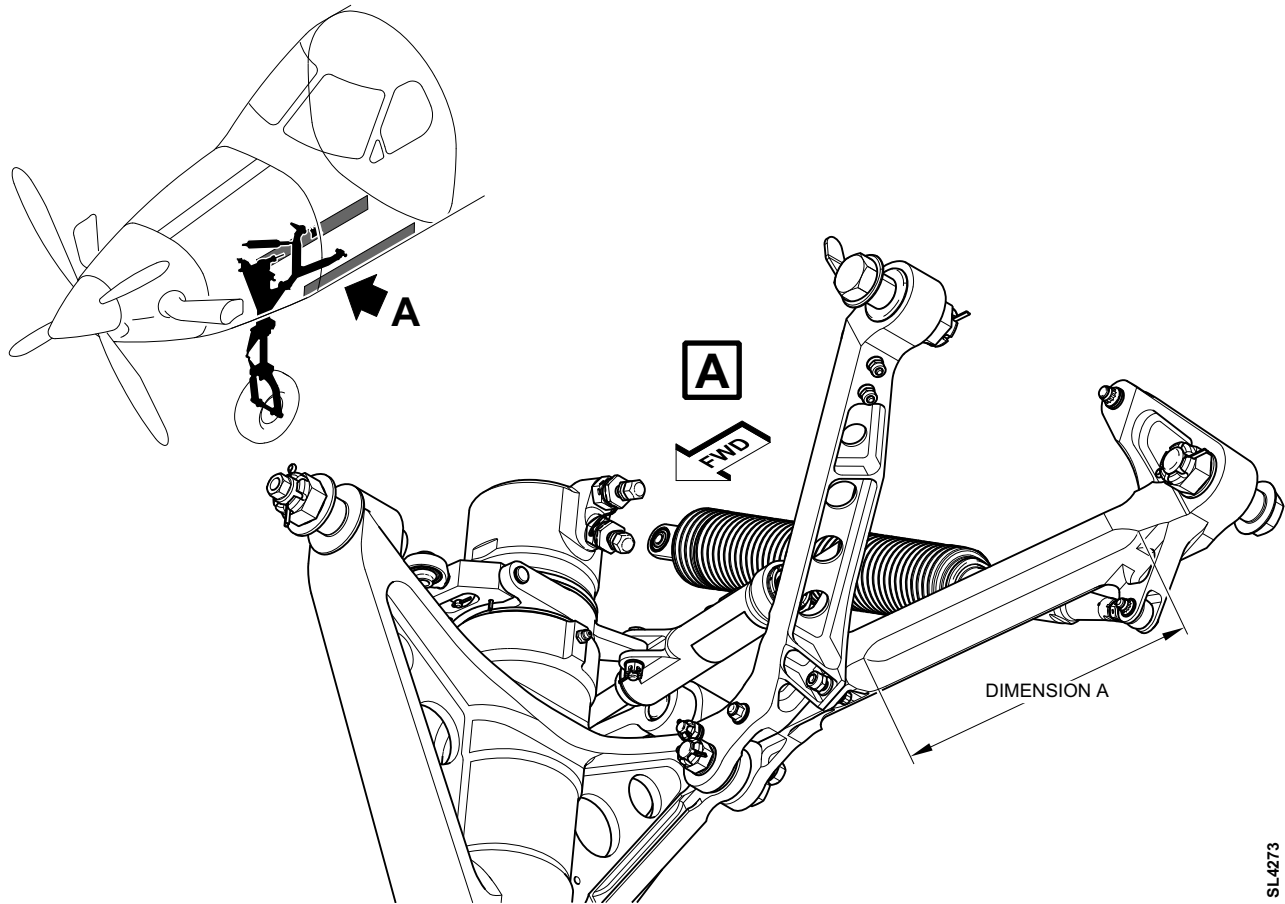
The RH drag link, P/N 532.20.12.289 requires frequent crack inspections as given in the ALS.

The RH drag link, P/N 532.20.12.296 is an improved part that does not need the crack inspections.

There are no obvious visual differences to the two drag links and it is possible that a maintenance facility may believe the improved RH drag link is installed when it may be the old RH drag link. This could lead to the inspections not being carried out, the life limit not being adhered to and could lead to failures of an old RH drag link.

To help maintenance facilities identify which RH drag link is installed on their aircraft, a dimension can be measured on the RH drag link, refer to the illustration below. The 'DIMENSION A' as given below in the table and shown on the illustration will identify which RH drag link is installed on the aircraft.

RH DRAG LINK ASSY P/N 532.20.12.289	RH DRAG LINK ASSY P/N 532.20.12.296
DIMENSION A: 210.00 mm (8.27 in)	DIMENSION A: 200.50 mm (7.89 in)



SL4273

Operators that require additional information should contact their authorized Pilatus Service Center, or Pilatus Customer Support on www.pilatus-aircraft.com → contact us.