

 Crafted in Switzerland

PC-21

THE NEXT GENERATION TRAINER MODEL BUILDING PLAN 1:25



 **PILATUS** 

PC-21

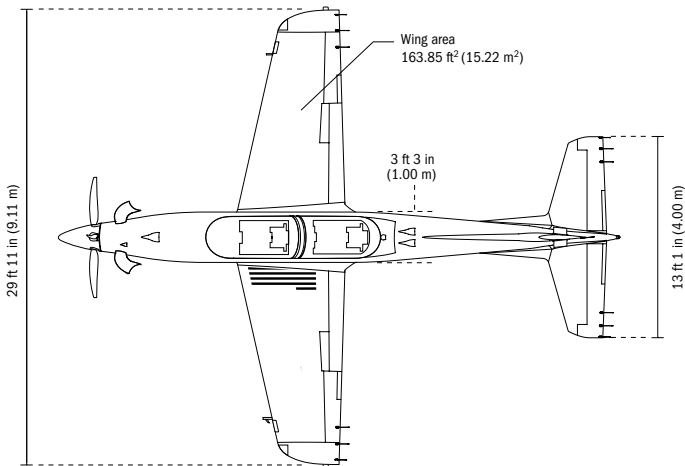
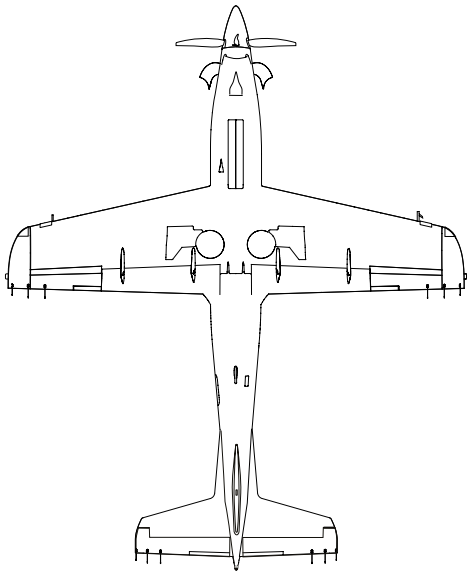
MODEL BUILDING PLAN 1:25

Pilatus Aircraft Ltd's newest turboprop product, the PC-21, has been developed and certified as a completely new training system with the objective of meeting the expectations of modern air forces over the next 30 years, both in terms of capability and life-cycle cost.

The PC-21 has a superior aerodynamic performance when compared with any other turboprop trainer on the market, a more powerful, flexible and cost-effective integrated training system than any other jet or turboprop trainer and a life-cycle support cost equal to current turboprop benchmarks.

TRAINING ROLES

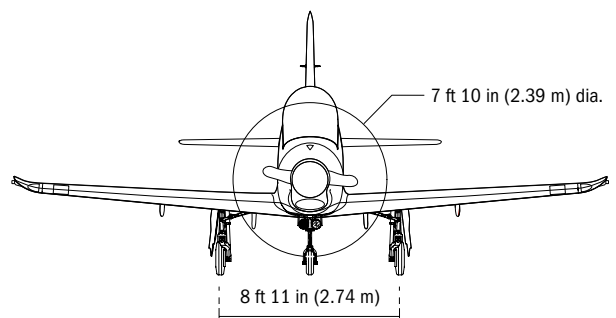
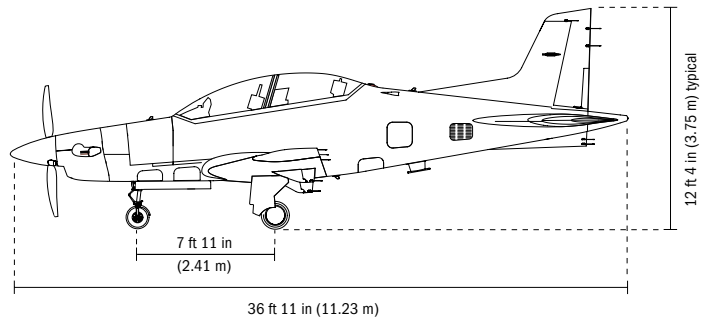
- Basic Flying Training
- Advanced Flying Training
- Full Mission Management Training
- Embedded Simulation and Emulation



PERFORMANCE

The PC-21, in the aerobatic configuration, at MTOW, 6,834 lbs (3,100 kg) has the following performance under international standard atmospheric (ISA) conditions:

Take-off distance over 50 ft (15 m) obstacle at sea level	2,618 ft	798 m
Landing distance over 50 ft (15 m) obstacle at sea level	3,383 ft	1031 m
Max. rate of climb, sea level	4,091 ft/min	20.78 m/sec
Max. operating speed (Vmo)	370 KEAS	685 km/h
Max. cruise speed (VH)		
- at sea level	323 KTAS	598 km/h
- at 10,000 ft	337 KTAS	624 km/h
Stall speed		
- flaps and gear up (Vs)	92 KCAS	170 km/h
- flaps and gear down (Vso)	81 KCAS	150 km/h
g loads	Aerobatic	Utility
- max. positive	+ 8.0 g	+ 5.0 g
- max. negative	- 4.0 g	- 2.5 g
Max. range	720 NM	1,333 km
WEIGHTS		
Basic empty weight (depending on configuration)	5,026 lb	2,280 kg
Max. take-off weight		
- aerobatic	6,834 lb	3,100 kg
- utility	9,370 lb	4,250 kg



STICKERS 1:5

**DANGER SPOILER
DO NOT TOUCH**



FUEL COMPARTMENT:
FUEL FILTER/ MAINTENANCE VALVE
FUEL SYSTEM WATER DRAIN
INSIDE

JET FUEL:
ASTM-D-1655 JET A, JET A-1, JET B
(P&WC SB 18104)
TOTAL CAPACITY 91.0 US GAL (344 LTR)
USABLE CAPACITY 89.1 US GAL (337 LTR)

REFUELING BONDING POINT

FUEL SYSTEM
WATER DRAIN

PRESSURE REFUEL COMPARTMENT

HYDRAULIC COMPARTMENTS
HYDR. FLUID : MIL-H-5606

MAINTENANCE
INDICATOR

NOSE LANDING GEAR SHOCK STRUT
N2 CHARGE PRESSURES

1 st. STAGE 51 PSI (3.5 BAR)
2 nd. STAGE 834 PSI (57.5 BAR)

MAIN LANDING GEAR SHOCK STRUT
N2 CHARGE PRESSURES

1 st. STAGE 141 PSI (9.7 BAR)
2 nd. STAGE 1668 PSI (115.0 BAR)

NOSE TYRE PRESSURE

3100 KG - 154 PSI (10.6 BAR)
3600 KG - 190 PSI (13.1 BAR)
4250 KG - 195 PSI (13.4 BAR)

MAIN TYRE PRESSURE

3100 KG - 143 PSI (9.8 BAR)
3600 KG - 158 PSI (10.9 BAR)
4250 KG - 187 PSI (12.9 BAR)

CRACK!
DO NOT REMOVE BATTERY COVER
UNLESS YOU ARE TRAINED TO DO SO
IF YOU ARE NOT TRAINED TO DO SO
CONTACT A QUALIFIED TECHNICIAN

STATIC PRESSURE
KEEP CLEAR

CLOSED

OPEN

PRESS TO UNLOCK



511.20.21.021a

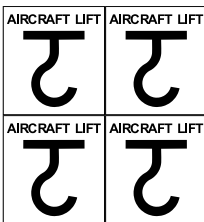
**NO STEP OUTBOARD
OF WALKWAY**

STEP

HANDHOLD

NO STEP

DO NOT PUSH



JACK POINT UNDER



51122.09.021



TIE DOWN POINT



51123.12.026



51123.12.027

BATTERY COMPARTMENT

28 VOLT DC
EXTERNAL POWER POINT

DANGER AIR BRAKE

DO NOT OPEN IF CROSSWIND
MORE THAN 35 KTS

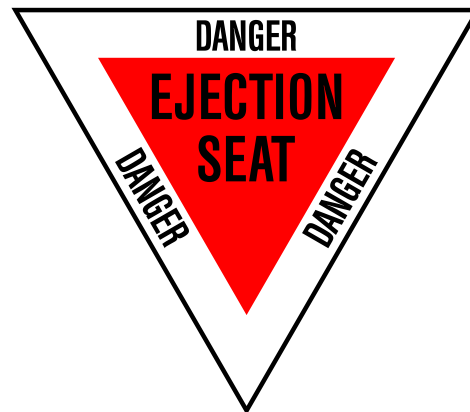


511.20.21.021a



511.20.21.020

DRAIN TANK
DUMP VALVE



CANOPY
FRACTURE SYSTEM,
FRONT

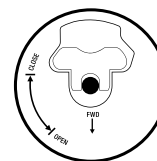
MOVE THE SLIDE COVER,
PUSH KNOB,
PULL HANDLE
AND EXTEND THE CORD,
MOVE TO AFT OF AIRCRAFT,
PULL TO OPERATE

BAGGAGE COMPARTMENT
MAX WEIGHT 25 KG

BAGGAGE COMPARTMENT
MAX WEIGHT 25 KG

AIRCRAFT WEIGHT **NOSE TYRE PRESSURE**
6834 LBS (3100 KG) - 154 PSI (10.6 BAR)
7937 LBS (3600 KG) - 190 PSI (13.1 BAR)
9369 LBS (4250 KG) - 195 PSI (13.4 BAR)

AIRCRAFT WEIGHT **MAIN TYRE PRESSURE**
6834 LBS (3100 KG) - 143 PSI (9.8 BAR)
7937 LBS (3600 KG) - 158 PSI (10.9 BAR)
9369 LBS (4250 KG) - 187 PSI (12.9 BAR)



511.21.21.048B

PC-21

DETAILED VIEW

NOSE/ENGINE



COCKPIT



FLAP SYSTEM



TAIL & ANTENNA



FRONT GEAR & LANDING LIGHTS



MAIN GEAR & AIR BREAK

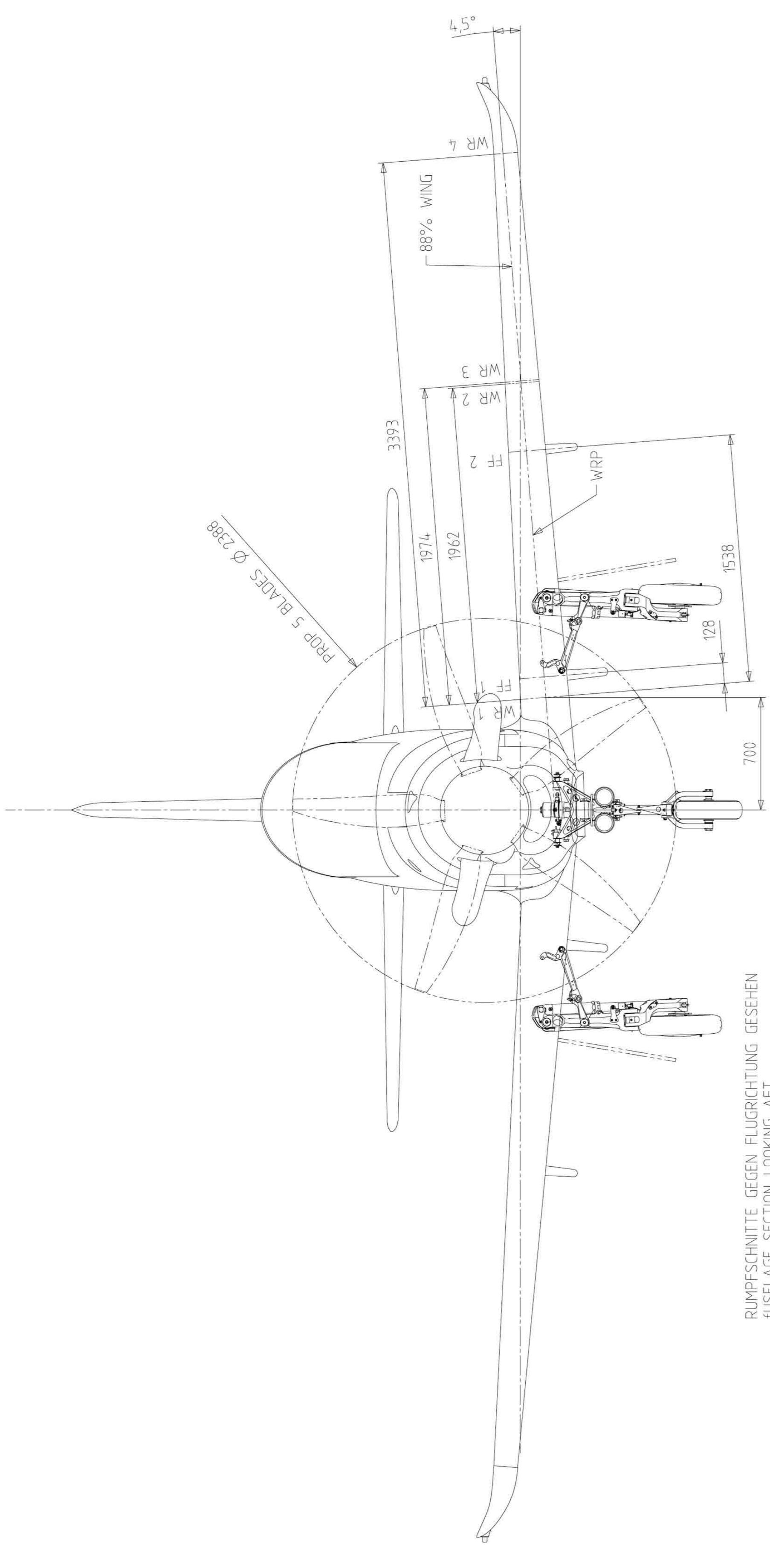
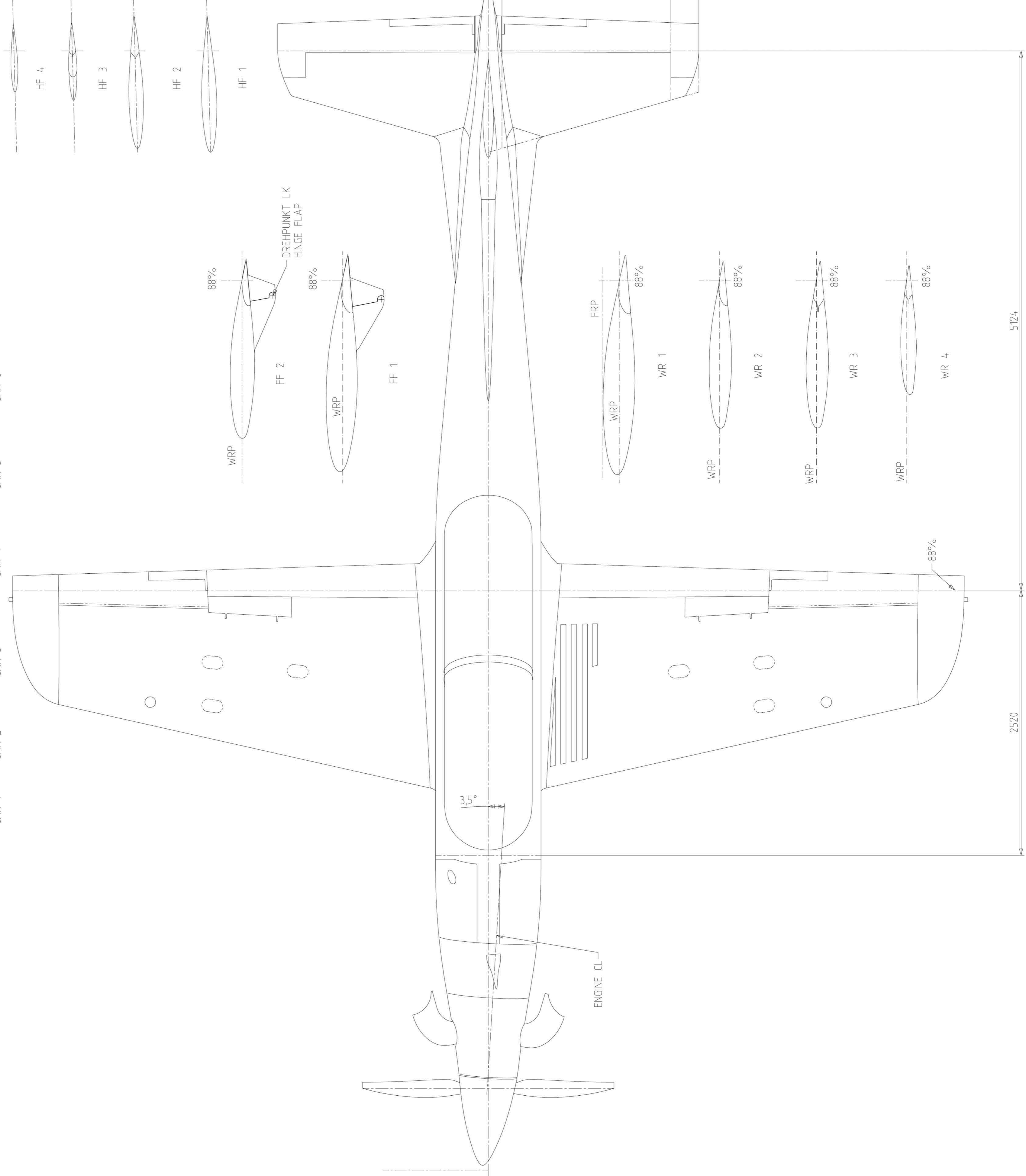
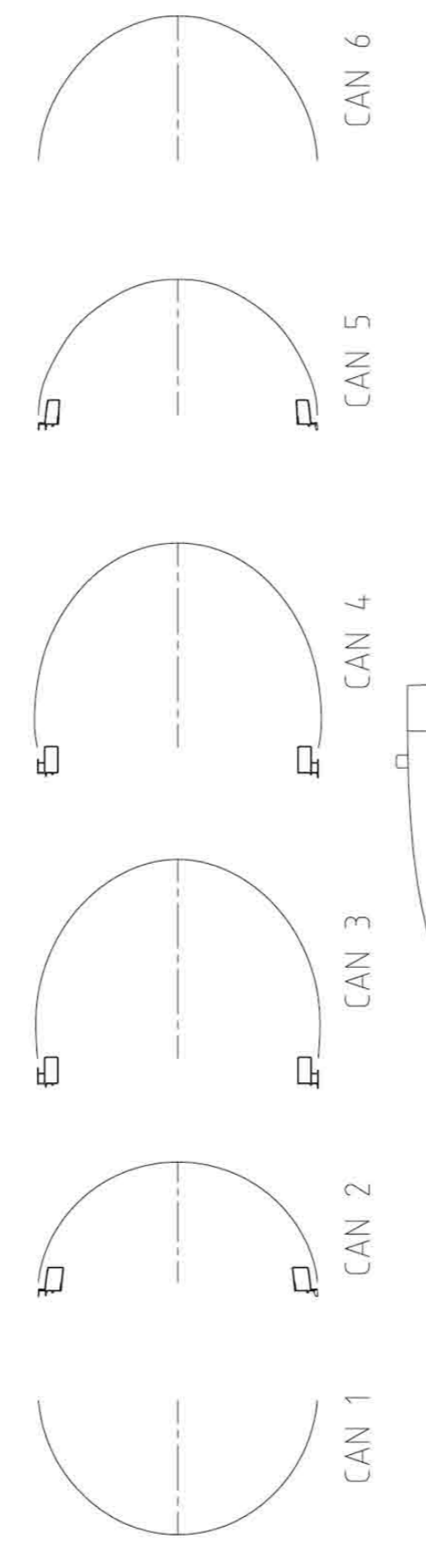
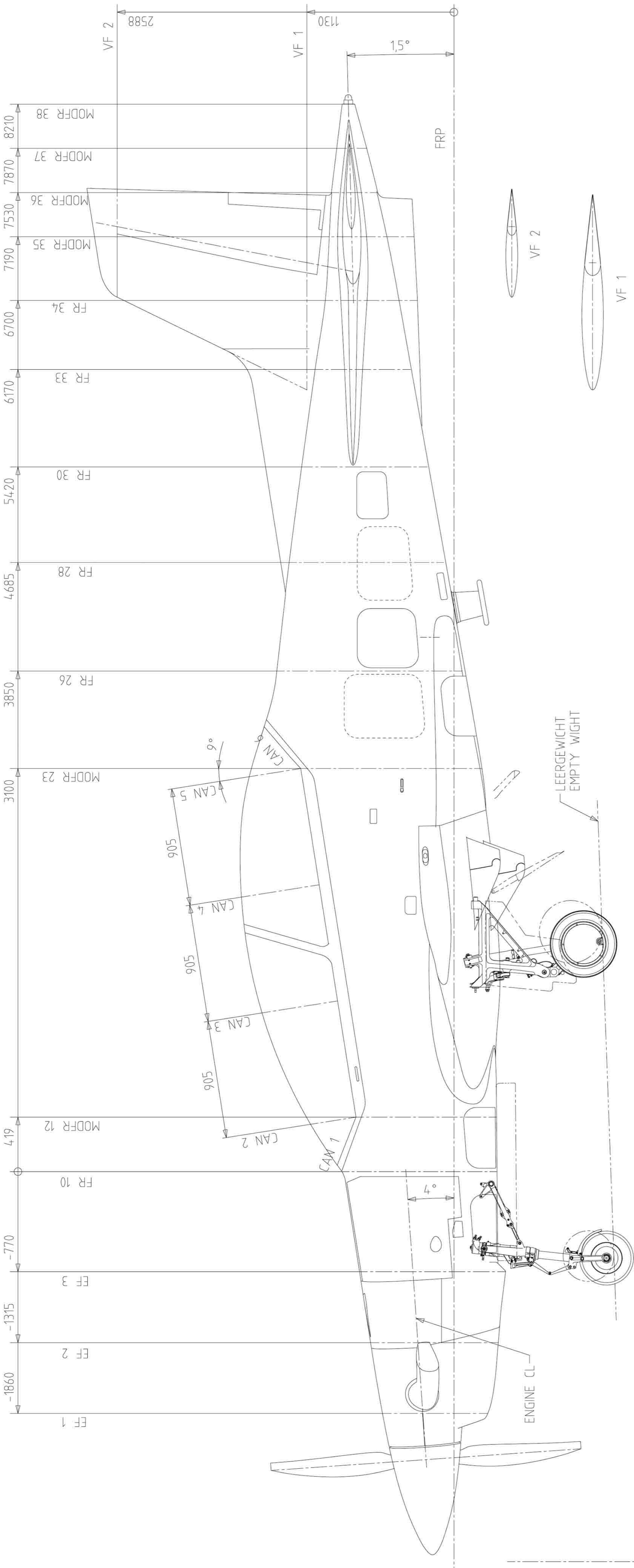


WINGTIP & STROBE

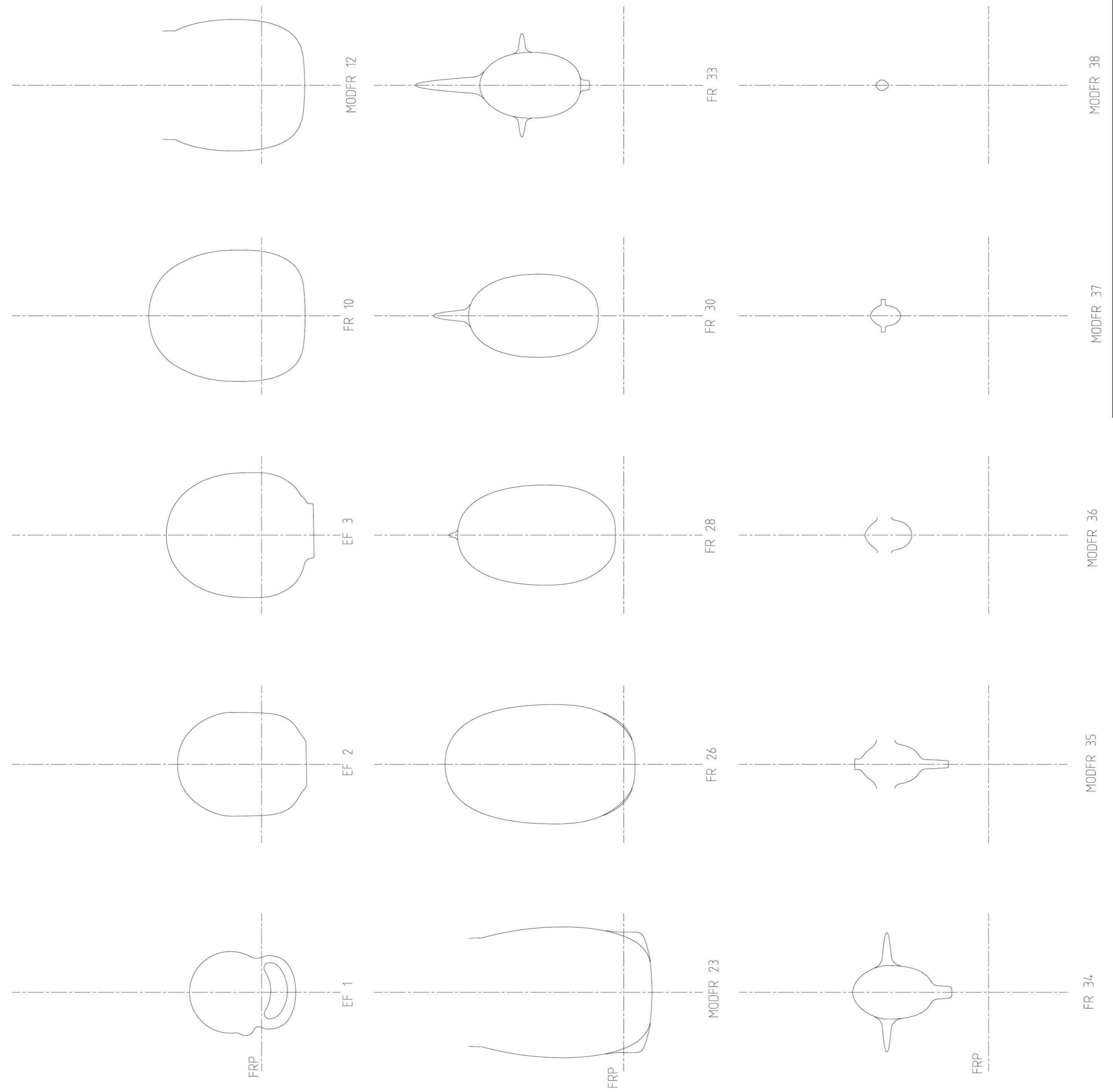


WINGTIP & LANDING LIGHT





RUMPFSEHNITTE GEGEN FLUGRICHTUNG GESEHEN
FUSELAGE SECTION LOOKING AFT

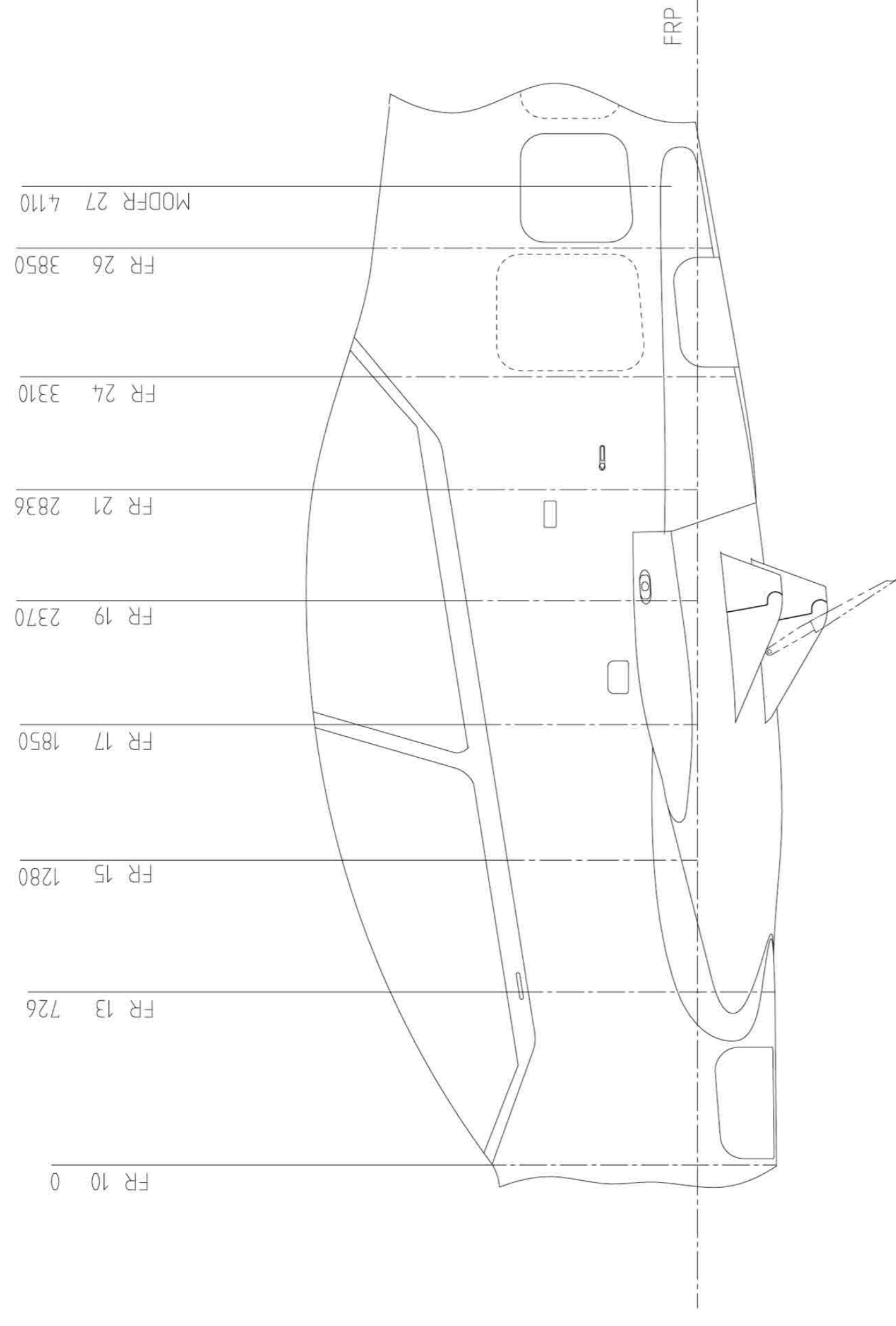
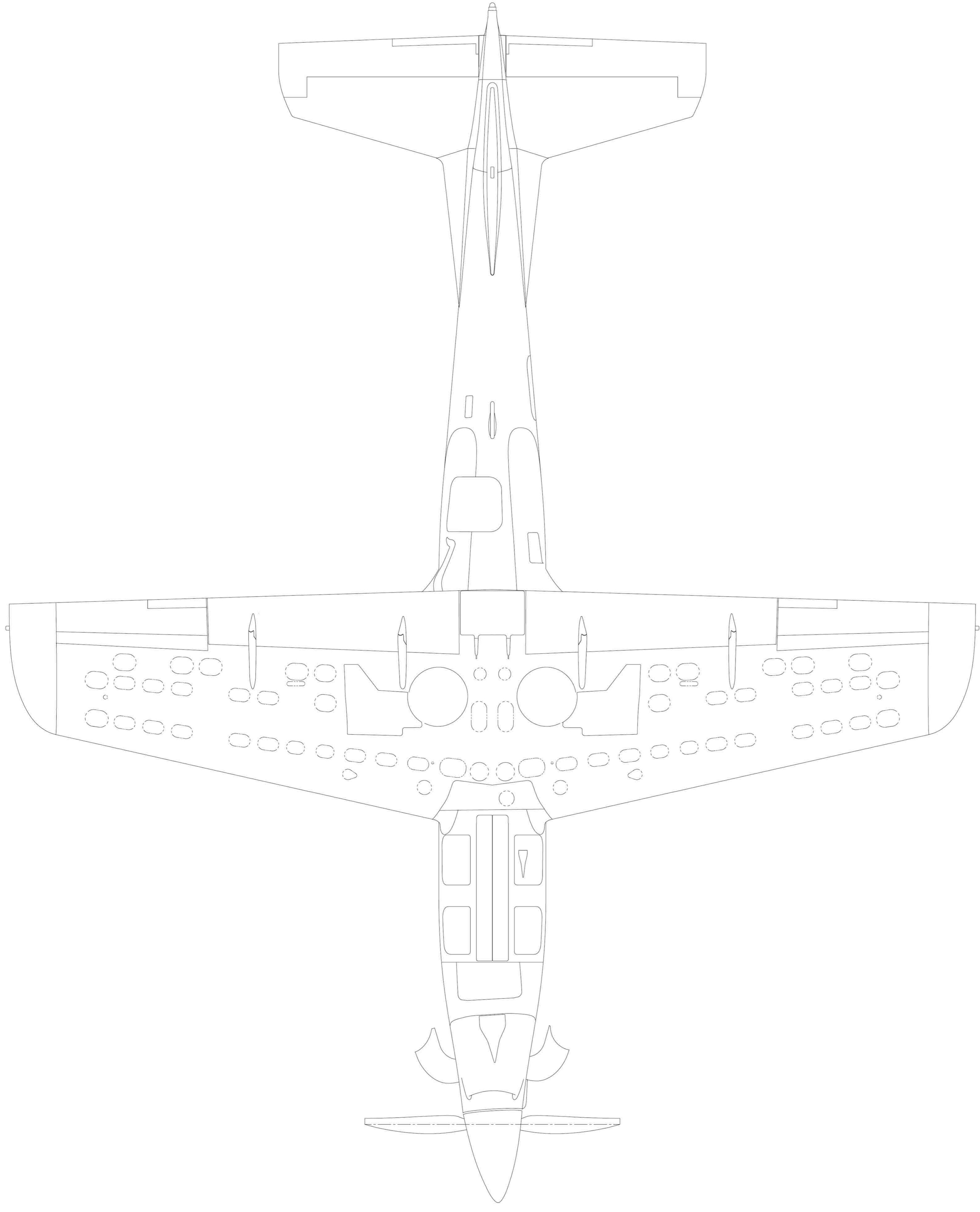


SPANNWEITE UEBER ALLES
WING SPAN OVER ALL 9 108m
LAENGE INLC HECKLAMPE
LENGTH INCL TAIL LIGHT 11 232m
HOEHE AUSGEFEDERT
HEIGHT EXTENDED 3 763m

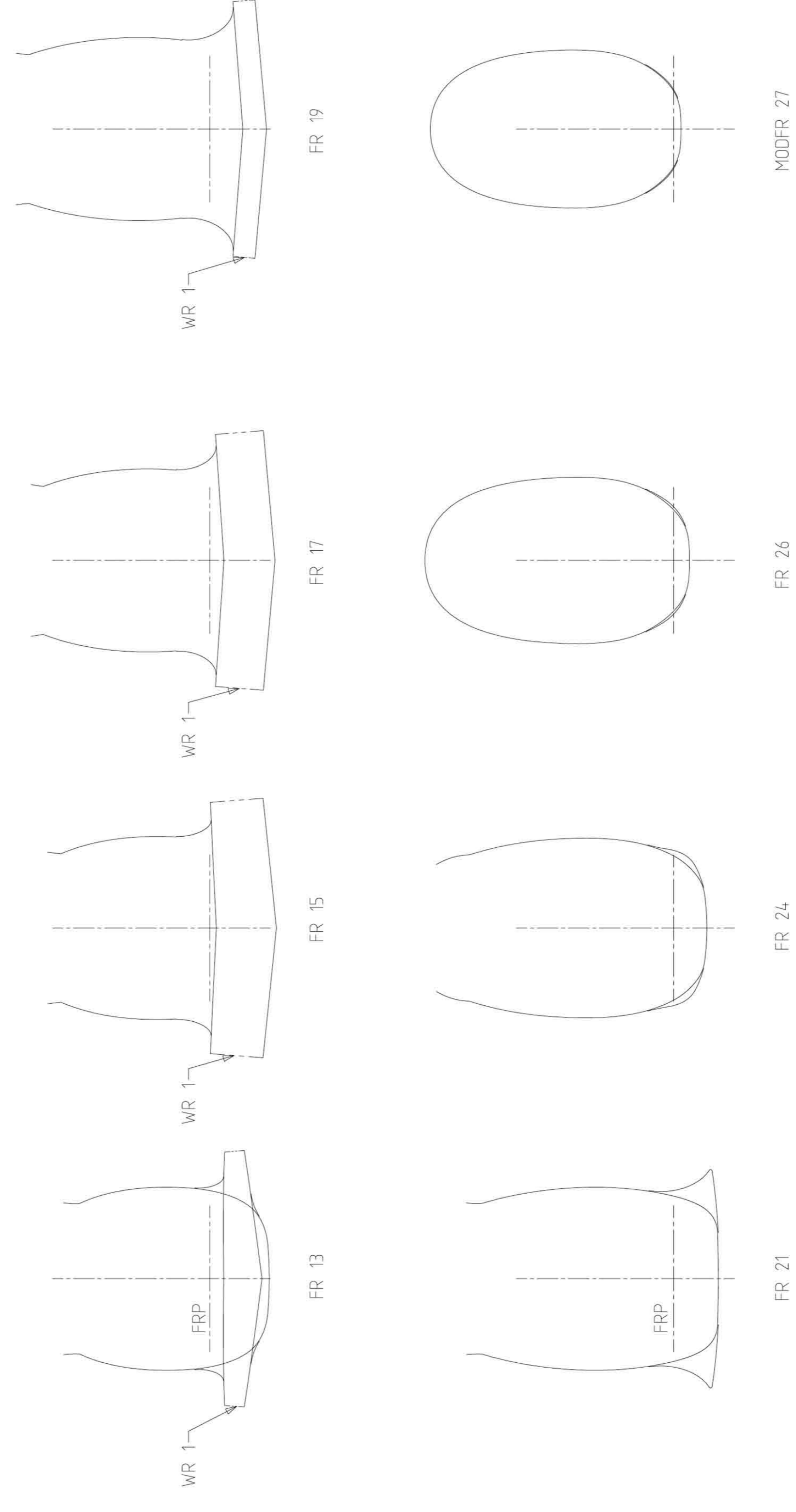
PC-21
PILATUS

Date Created: 25.10.2005
Tool Drawing No: 5061021030
Scale: 1:20
Sheet: 1 of 2

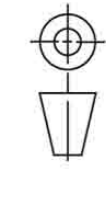
This drawing shall only be used for model aircraft.
Copyright Pilatus Aircraft Ltd.
All rights reserved.
www.pilatus-aircraft.com



RUMPFSCHNITTE GEGEN FLUGRICHTUNG GEGESHEN
FUSELAGE SECTION LOOKING AFT



PC-21
PILATUS



Date Created: 07.11.2005
Scale: 1:20
Tool Drawing No: 5061021030
Sheet: 2 of 2

This drawing shall only be used for model aircraft.
Copyright Pilatus Aircraft Ltd.
All rights reserved.

www.pilatus-aircraft.com

Founded in 1939, Pilatus Aircraft Ltd is the only Swiss company to develop, produce and sell aircraft to customers around the world: from the legendary Pilatus Porter PC-6 to the best-selling single-engine turboprop in its class, the PC-12, and the PC-21, the training system of the future. The latest development is the PC-24 – the world's first ever business jet for use on short unprepared runways. Domiciled in Stans, the company is certified to ISO 14001 in recognition of its efforts for the environment. The Pilatus Group includes two independent subsidiaries in Broomfield (Colorado, USA) and Adelaide (Australia). With over 2,000 employees at its headquarters, Pilatus is one of the largest employers in Central Switzerland. Pilatus provides training for about 120 apprentices in 13 different professions – job training for young people has always been a very high priority at Pilatus.

Pilatus Aircraft Ltd

P.O. Box 992
6371 Stans, Switzerland
Phone + 41 41 619 61 11
info.stans@pilatus-aircraft.com

Pilatus Business Aircraft Ltd

Rocky Mountain Metropolitan Airport
11755 Airport Way
Broomfield, CO 80021, USA
Phone + 1 800 745 2887
info.broomfield@pilatus-aircraft.com

Pilatus Australia Pty Ltd

17 James Schofield Drive
Adelaide Airport SA 5950, Australia
Phone + 61 8 8234 4433
info.adelaide@pilatus-aircraft.com

